

Scissor Lift

Snorkel

www.snorkel.com.au



S2646

- 7.93m maximum working height
- Pothole protection system
- Fork lift loadable from 3 sides
- 454kg platform capacity
- Fold down handrails
- Non-marking tyres
- Driveable at full height
- Joystick control on removeable console
- Dual wheel drive system
- These compact battery operated machines feature a standard roll-out platform, non-marking tires, center pivot steering for tight maneuvering, plus integral pothole protection.

Other Snorkel Work Platforms

Snorkel also manufactures a range of other work platforms including both small & large scissor lifts, trailer boom units, truck mounted boom units, and large telescoping boom machines. Many of these units are available with alternative power sources including 24V DC options.

Truck Mounted Boom



Trailer Mounted Boom



Rough Terrain Scissor Lift



Self Propelled Boom



Snorkel

Your Snorkel Sales Representative
Clint Norgrove

Mobile: 021 774 722

Email: clint@snorkel.co.nz

Manufacturing Plant: 36 Bruce Road, Levin, New Zealand
Telephone: (06) 368-9168
Fascimile: (06) 368-9164

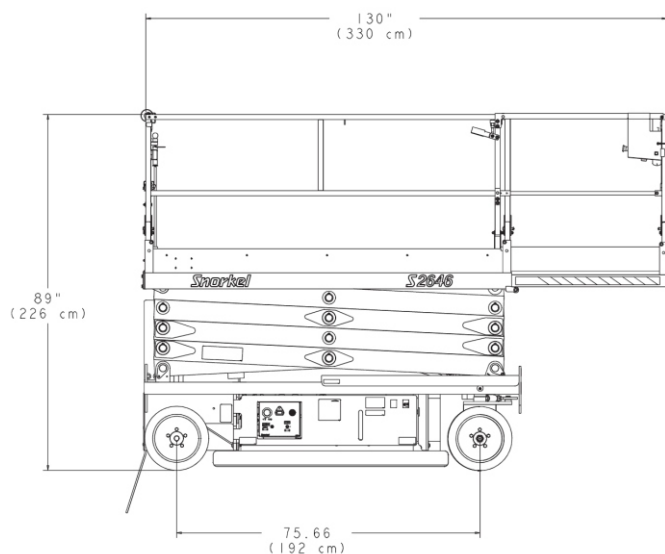
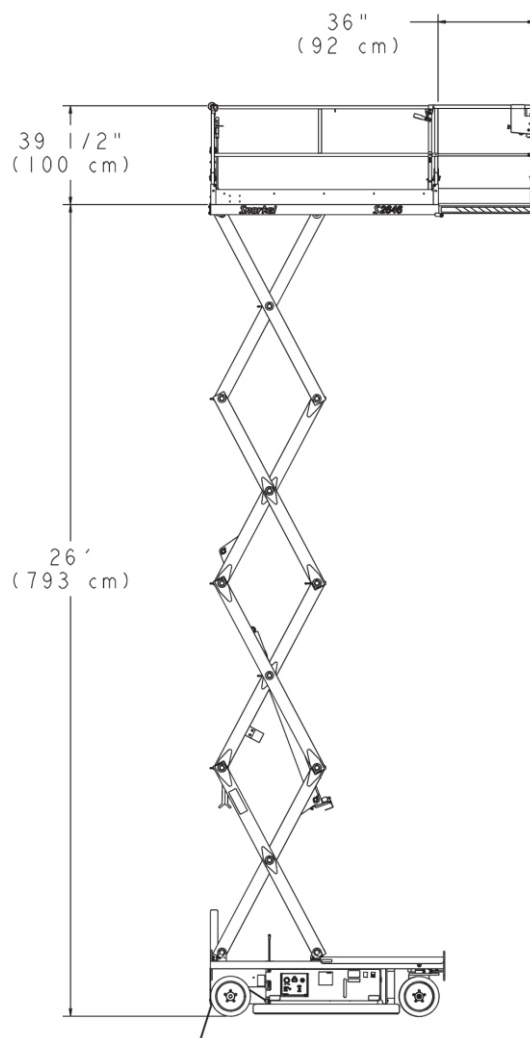
S2646 Scissor Lift

TECHNICAL DATA

PLATFORM	
Height.....	26' (7.93 m)
Size	45" x 94" (114.3 cm x 238.7 cm)
Rollout Extension	6" (91.4 cm)
Platform Length – extended.....	130" (330 cm)
Capacity	1,000 lbs. (454 kg)
Capacity on Rollout Extension.....	250 lbs. (113.3 kg)
MACHINE DIMENSIONS	
Overall Stowed Height (to Guardrails).....	89" (226 cm)
Overall Stowed Height (Guardrails folded).....	61" (1.5 m)
Overall Length.....	96" (2.4 m)
Weight.....	5,200 lbs. (2,359 kg)
Ground clearance	
At machine center.....	4" (10.1 cm)
Pothole protection deployed.....	1" (2.5 cm)
PERFORMANCE	
Tire size (Solid Rubber).....	16" x 5" (40.6 cm x 12.7 cm)
Gradeability.....	25%
Drive speed – Stowed.....	2 mph (3.2 km/h)
Drive speed – Raised.....	0.5 mph (0.8 km/h)
Electrical system.....	24 volts
Batteries.....	240 amp-hr
Charger.....	19 amp
Maximum drive height.....	26' (7.9 m)
Turning radius outside.....	101" (2.5 m)
Turning radius inside.....	10" (25.4 cm)

OPTIONS

- Horn
- Flashing Light
- Battery Condition Indicator
- Lanyard Anchors
- Key Switch
- Swing Gate
- Maintenance free batteries



Danger: Standard models described in this brochure are NON-INSULATED and do not provide electrocution protection from contact with or close proximity to energised conductors which is pointed out on the decals and placards attached to the machine.

Products in this brochure comply with relevant ANSI and Australian Standards. This literature is for illustrative purposes only. Consult Operating/Maintenance and Parts Manuals for proper procedures. Specifications may vary and are subject to change without notice.

Snorkel

www.snorkel.com.au